


CONSTRUCTION	ituft 1/12" loop tipsheared	STAIR SUITABILITY	EN 1963
STRUCTURE	ituft 1/12" bouclé tipsheared	ESCALIERS	A: intensive use
STRUKTUR	ituft 1/12" tipsheared-Schlinge	TREPPENEIGNUNG	
STRUCTUUR	ituft 1/12" lussenpool tipsheared	TRAPPENGESCHIKTHEID	
PILE MATERIAL	100% PA 6 IMPREL®	PERMANENTLY ANTISTATIC	ISO 6356
COMPOSITION DU VELOURS	Solution Dyed	ANTISTATIQUE PERMANENT	≤ 2 kV
POLMATERIAL		PERMANENT ANTISTATISCH	
POOLMATERIAAL		PERMANENT ANTISTATISCH	
PRIMARY BACKING	Non woven PES	IMPACT NOISE RATING	ISO 140-8
SUPPORT	PES non tissé	ISOLATION PHONIQUE	26 dB ΔLw
TRÄGERMATERIAAL	PES Vlies	TRITTSCHALLVERBESSERUNG	
TUFTDOEK	PES Vilt	GELUIDSISOLATIE	
SECONDARY BACKING	Twinback	SOUND ABSORPTION	ISO 354
DOSSIER		ABSORPTION PHONIQUE	0,25 αw
RÜCKEN		SCHALLABSORPTIONSGRAD	
TAPIJTRUG		THERMAL RESISTANCE	ISO 8302
PILE WEIGHT	Ca. 800 gr/m <sup>2</sup>	RÉSISTANCE THERMIQUE	0,11 m <sup>2</sup> K/W
POIDS DU VELOURS		WÄRMEDURCHLASSWIDERSTAND	
POLEINSATZGEWICHT		WARMTEDOORLAATWEERSTAND	
POOLGEWICHT		FASTNESS TO LIGHT	ISO 105-B02
TOTAL WEIGHT	Ca. 2.200 gr/m <sup>2</sup>	SOLIDITÉ A LA LUMIÈRE	≥ 7
POIDS TOTAL		LICHTECHTHEIT	
GESAMTGEWICHT		LICHTECHTHEID	
TOTAAL GEWICHT		COLOUR FASTNESS TO WATER	EN ISO 105-E01
PILE HEIGHT	Ca. 3,6-5,2 mm	SOLIDITÉ À L'EAU	≥ 4-5
EPAISSEUR DU VELOURS		WASSERECHTHEIT	
POLHÖHE		WATERECHTHEID	
POOLHOOGTE		FIRE RESISTANCE	EN 13501-1
TOTAL HEIGHT	Ca. 7,7-9,3 mm	COMPORTEMENT AU FEU	Cfl-s1
EPAISSEUR TOTAL		BRENNVERHALTEN	
GESAMTHÖHE		BRANDGEDRAG	
TOTALE DIKTE		RUBBING FASTNESS	EN ISO 105-X12
TUFT DENSITY	Ca. 282.000/m <sup>2</sup>	SOLIDITÉ AU FROTTEMENT	≥ 4
NOMBRES DE POINTS		REIBECHTHEIT	
NOPPENZAHL		WRIJFECHTHEID	
AANTAL PUNTEN		NUMBER OF COLOURS	9
PILE DENSITY	Ca. 0,122 g/cm <sup>3</sup>	NOMBRES DE COULEURS	
DENSITÉ DU VELOURS		ANZAHL FARBEN	
POLROHDICHTTE		AANTAL KLEUREN	
POOLDICHTHEID		WIDTH	EN ISO 3018
CLASSIFICATION	EN 1307	LARGEUR	ca. 400 cm
CLASSEMENT	32 - LC2	BREITE	
KLASSIFIKATION		BREEDTE	
CLASSIFICATIE		DESIGN REPEAT CM	ca. 199 (W) x
CASTOR CHAIR SUITABILITY	EN 985	RACCORD CM	ca. 424 (H)
CHAISE À ROULETTES	A: intensive use	RAPPORT CM	repeatless installation
STUHLROLLENEIGNUNG		DESSINRAPPORT CM	possible
ROLSTOELGESCHIKTHEID			



EN14041




21

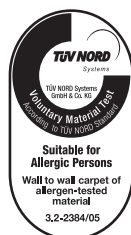
ITC CO BV  
Kanegemstraat 15 - BE 8700 Tielt

DOP: 1011#IEOACL

Textile Floor Covering EN1307  
Notified body 2401



my.itc-carpets.com



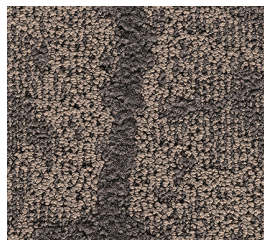
REG. NR  
**2E4C701A**

www.pro-dis.info

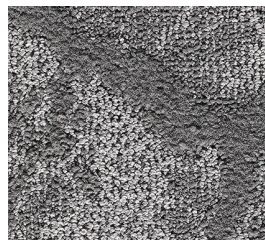




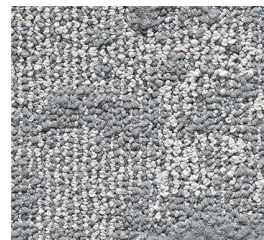
▲ 35



▲ 47



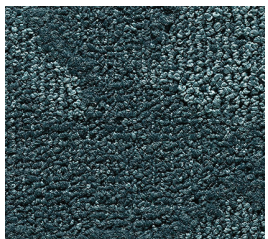
▲ 96



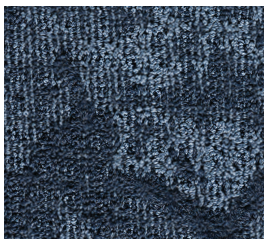
▲ 95



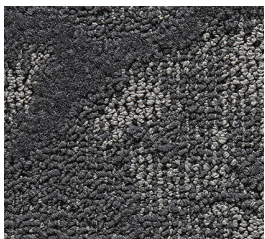
▲ 90



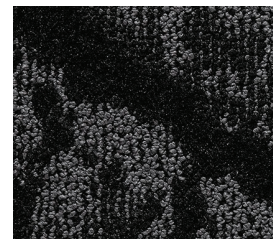
▲ 27



▲ 77



▲ 97



▲ 98